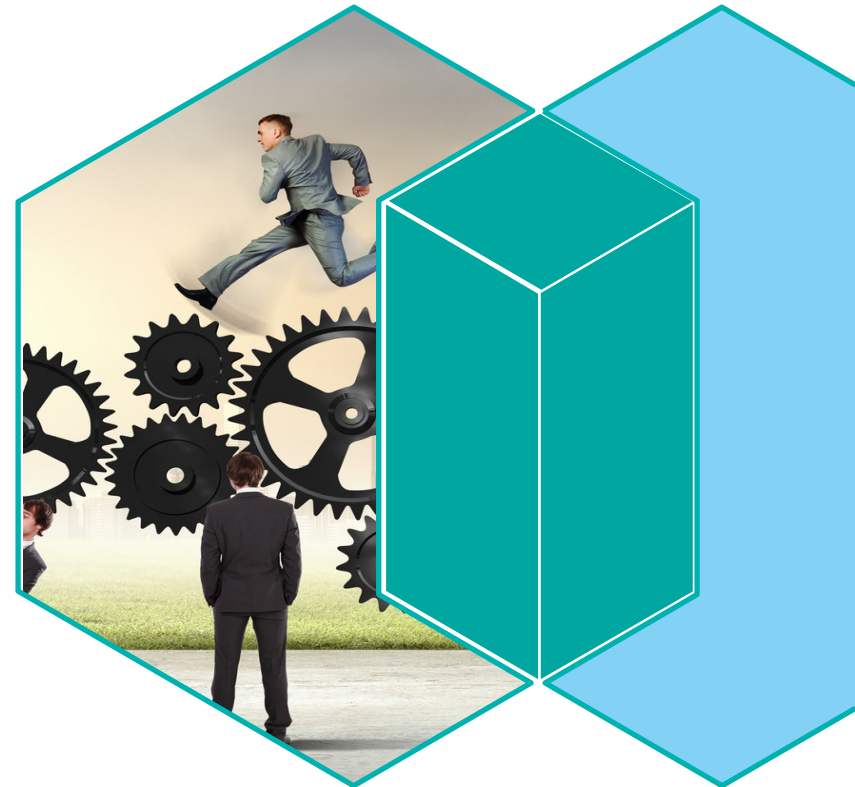




IBM Storage Solutions & Software Defined Infrastructure

Strategy, Trends, Directions

Calline Sanchez,
Vice President, IBM Enterprise Systems Storage
Twitter: @cksanche LinkedIn:
www.linkedin.com/pub/calline-sanchez/9/599/b09/





Storage Requirements
Getting Out Of Hand?

Where is **IBM** Storage Investing?

IBM Storage and Software Defined Portfolio

Storage Systems

Tier 0 Acceleration



FlashSystem 900

Enterprise Storage Systems



FlashSystem V9000



FlashSystem A9000



FlashSystem A9000R



XIV

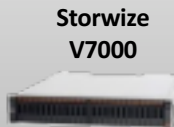


DS8880

Midrange & Entry Storage Systems



Storwize V5000



Storwize V7000



Storwize V7000 Unified

Tape and Virtual Tape Systems



TS7760



ProtecTIER Deduplication



Tape Libraries

TS4500



LTO7 and enterprise tape drives

Software Defined Storage

IBM Spectrum Storage and Cleversafe

- IBM Spectrum Virtualize
- IBM Spectrum Protect
- IBM Spectrum Control
- IBM Spectrum Accelerate
- IBM Spectrum Scale
- IBM Spectrum Archive
- IBM Spectrum Conductor
- IBM Cleversafe



IBM Spectrum Storage

Software Defined Computing

IBM Spectrum Computing

- IBM Spectrum Symphony
- IBM Spectrum LSF
- IBM Spectrum Conductor



IBM Spectrum Computing

Integrated Infrastructure Solutions



VersaStack



PurePower



IBM Elastic Storage Server

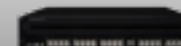
Storage Networking



SAN768B-2 & SAN384B-2



MDS 9148S



SAN42B-R

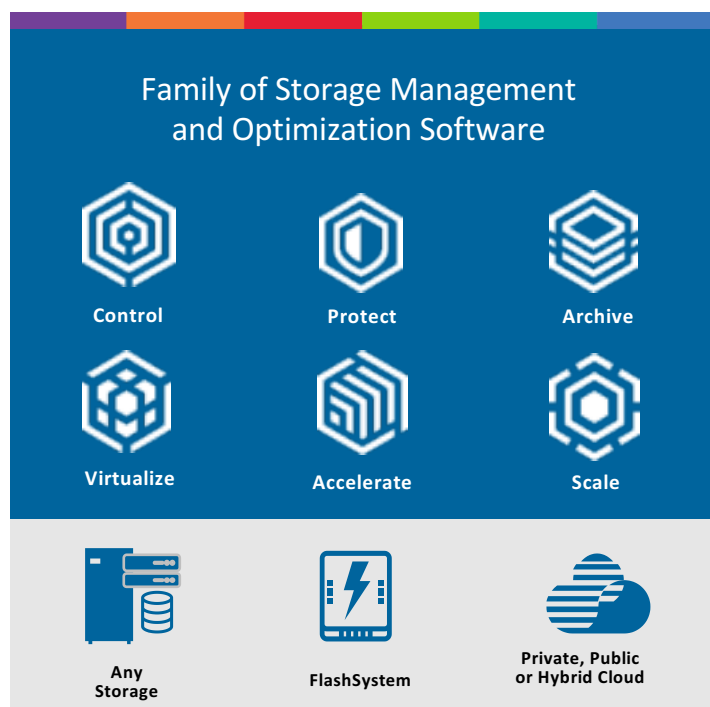


MDS 9718, 9710 & 9706

IBM Spectrum Storage Family

Proven Technology, Open Standards, Modular Adoption

#1
Software Defined
Storage



IBM Spectrum Control	Analytics-driven hybrid cloud data management to reduce costs by up to 73%
IBM Spectrum Protect	Optimized hybrid cloud data protection to reduce backup costs by up to 53 percent
IBM Spectrum Archive	Fast data retention that reduces TCO for active archive data by up to 90%
IBM Spectrum Virtualize	Virtualization of mixed block environments stores up to 5x more data
IBM Spectrum Accelerate	Enterprise block storage for hybrid cloud deployed in minutes instead of months
IBM Spectrum Scale	High-performance, highly scalable hybrid cloud storage for unstructured data driving cognitive applications

IBM Spectrum Suite: single license



IBM All-Flash Family

Flash for all primary storage workloads

1B
Invested in Flash
Storage

New
April '16

FlashSystem A9000



Cloud service providers

- Full time data reduction
- Workloads: Cloud, VDI, VMware

New
April '16

FlashSystem A9000R



Large deployments

- Full time data reduction
- Workloads: Mixed and cloud

Enhanced
August '16

FlashSystem V9000



Virtualizing the DC

- Enterprise class heterogeneous data services and selectable data reduction

New
August '16

Storwize V7000F



Mid-Range

- Enterprise class heterogeneous data services and selectable data reduction

New
August '16

Storwize V5030F



Entry / Mid-Range

- Enterprise class heterogeneous data services and selectable data reduction

New
April '16

DS8888



High End Server

- Mainframe
- High End Power
- Enterprise Class**
- Reliability
- Accessibility
- Availability

New
July '16

DeepFlash 150



All-Flash for Big Data

- High capacity
- High density

FlashSystem 900

All flash array for
application acceleration

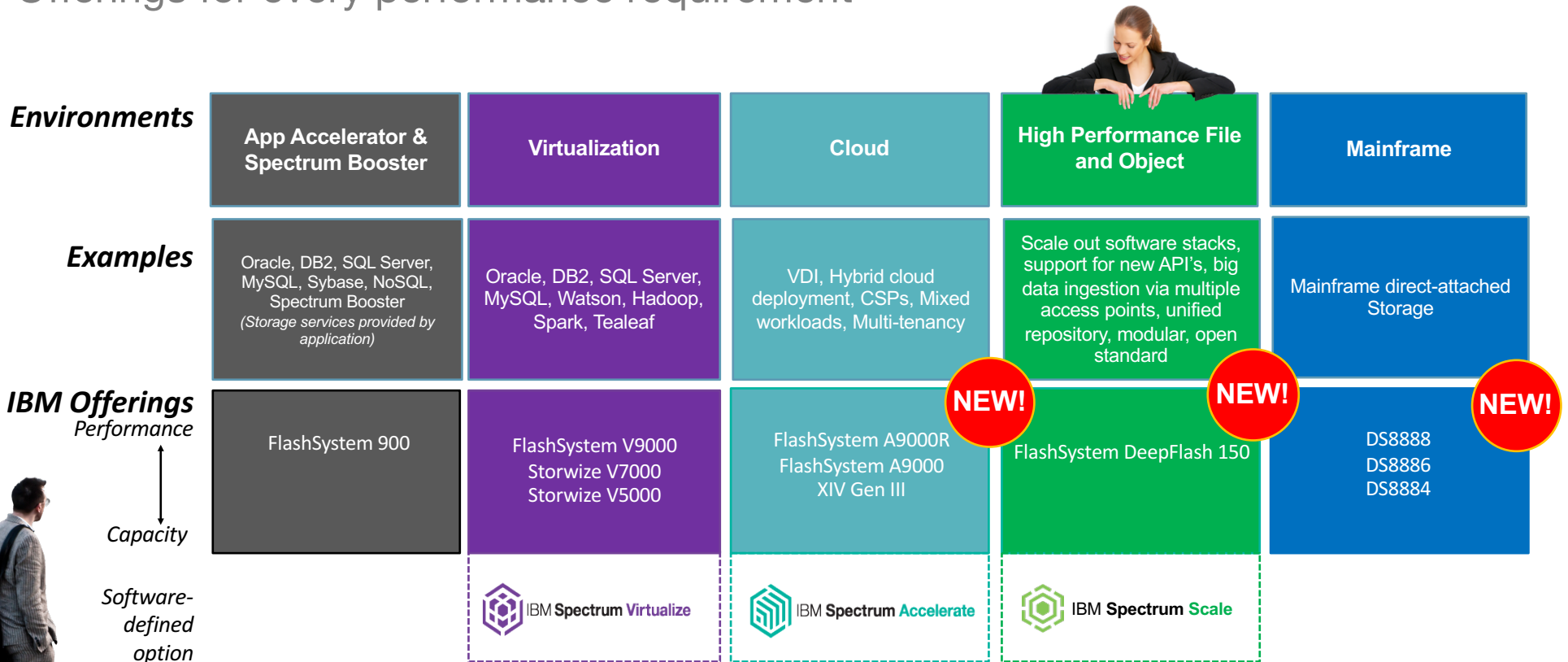


- Extreme performance
- Targeting database acceleration & Spectrum Storage booster

VersaStack™
Solution
by Cisco and IBM

The Right Flash for the Right Workload and Environment

Offerings for every performance requirement





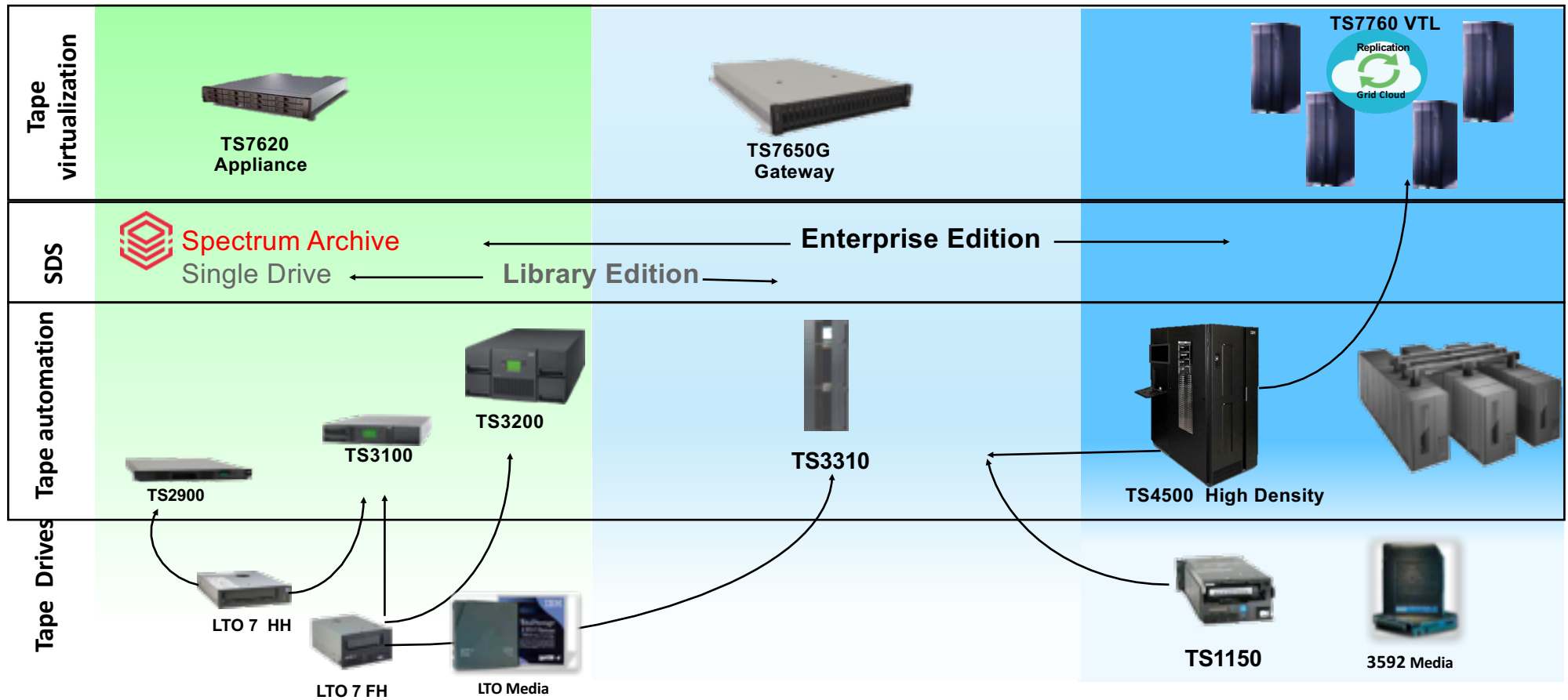
Tape: Protecting Your Assets.

IBM Tape Solutions: Comprehensive Portfolio

Entry

Mid-Range

Enterprise



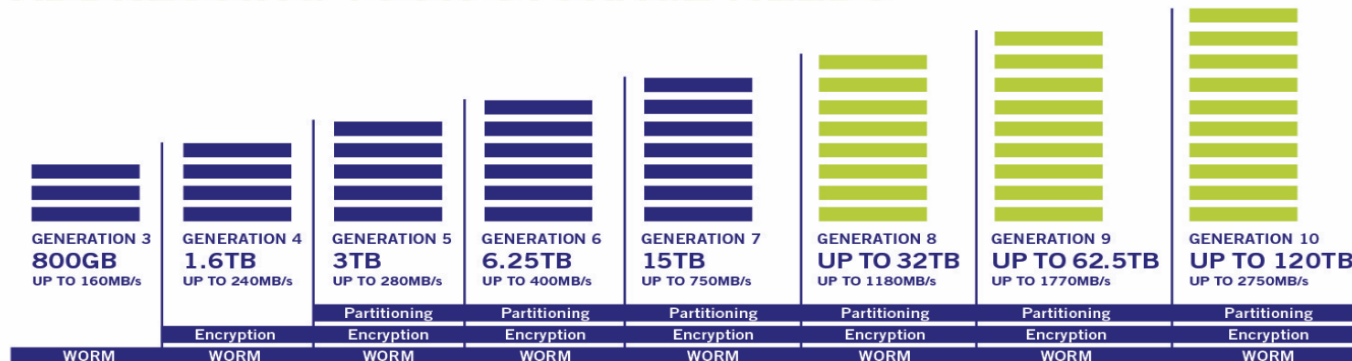


LTO Ultrium

Protect your data investments
from generation to generation.



LTO ULTRIUM ROADMAP ADDRESSING YOUR STORAGE NEEDS



Note: Compressed capacities for generations 1-5 assume 2:1 compression. Compressed capacities for generations 6-10 assume 2.5:1 compression (achieved with larger compression history buffer).
Source: The LTO Program. The LTO Ultrium roadmap is subject to change without notice and represents goals and objectives only.
Linear Tape-Open, LTO, the LTO logo, Ultrium, and the Ultrium logo are registered trademarks of Hewlett Packard Enterprise, IBM and Quantum in the US and other countries.



Advantages of Tape

Energy Efficient: no power needed once data is recorded

Secure:

- Data is inaccessible when cartridge is not mounted
- Drive level encryption
- Portable

Long expected media **lifetime** (30+ years)

Reliable: Typically no data loss in case of drive failure

Affordable: 1c per GB acquisition cost at scale and 10X lower TCO than competing solutions



Tape Product Innovation

Investing and delivering innovation

- **Barium Ferrite Tape Media Collaboration with FujiFilm**
- **Timing-Based Servo and Surface Control Guiding**
- **Compact Tape Path with Flat Head Geometry Contour**
- **GMR head technology with protective overcoat**

124 Patents Issued
2014



Accelerate Product Delivery (June 28 2016 Statement of Direction)

- **15TB+ capacity enterprise drives with Ethernet interfaces**
- **Remote Direct Memory Access (RDMA) over Converged Ethernet (RoCE)**
- **Increase capacity of 3592 JD cartridges from 10 TB to 15 TB**

Investment in Tape!



Incubate Data Scientists for Innovation

Solving customers' most critical challenges

IBM Research

12 labs. 6 continents.



IBM Research helped to optimize reduction features, like deduplication and compression, for the speed of flash.

INNOVATION

IBM Design



Storage management has never been so simple - the innovative interface has earned more than 15 patents

SIMPLICITY



Flash Optimized
DS8K



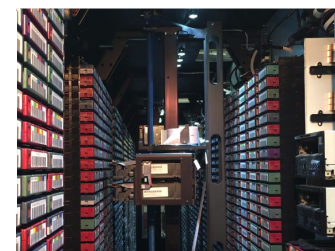
TS7760
Cluster

AVAILABILITY

Supporting mission critical applications while enabling fast analytics and data lifecycle management.

EFFICIENCY

Field-proven IBM Tape solutions provide low cost storage for traditional workloads and emerging use cases.



FOUNDATION

IBM Systems

Thank you.



ibm.com/storage

