



Fujifilm's 5th Annual Global IT Executive Summit

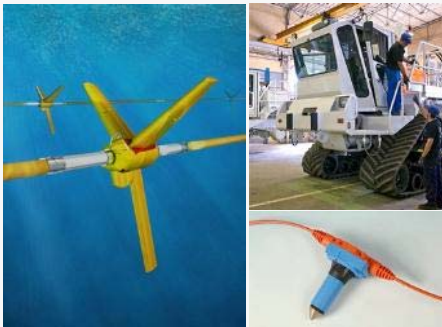
24th October 2013

Passion for Geoscience



CGG and our Business: Organization

Equipment



Full range of products and clear market leadership onshore, offshore and downhole:

- Technology leadership
- Large installed base
- A cornerstone for CGG integrated solutions

Acquisition

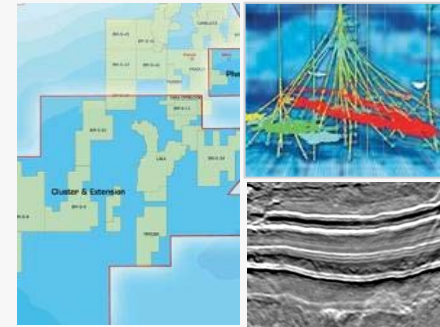


Full range of seismic and other geophysical methods for acquisition:

- Land
- Marine
- Seabed*
- Airborne



Geology, Geophysics & Reservoir



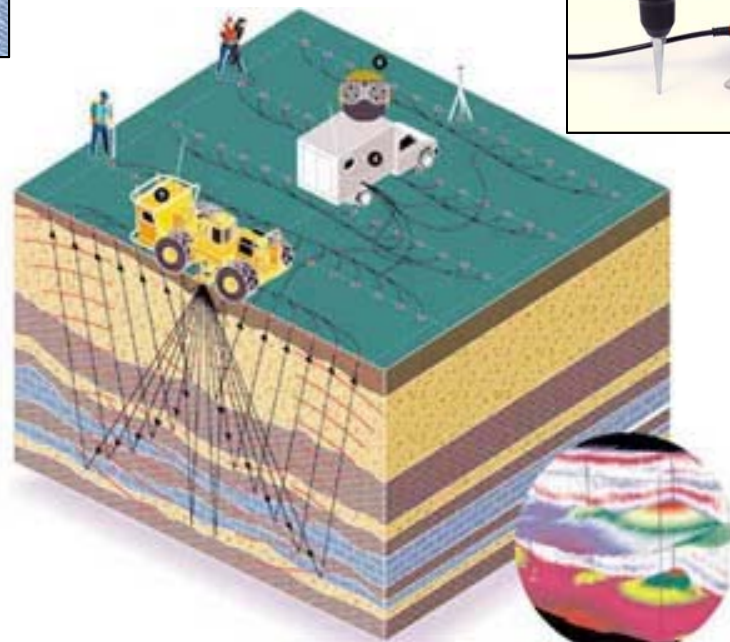
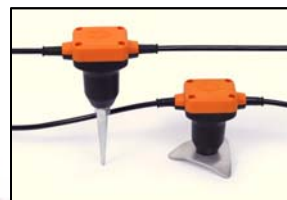
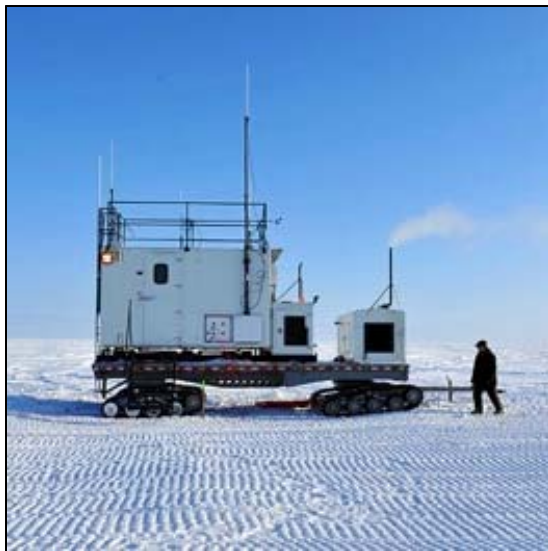
- Subsurface Imaging
- Reservoir Software & Services
- Geological Services
- Exploration & Appraisal
- Satellite Mapping
- Multi-Client Data Library (Seismic, Grav-Mag, Geological)
- Data Management Services

*Through the Seabed Geosolutions joint venture owned 60 % by Fugro % and 40 % by CGG

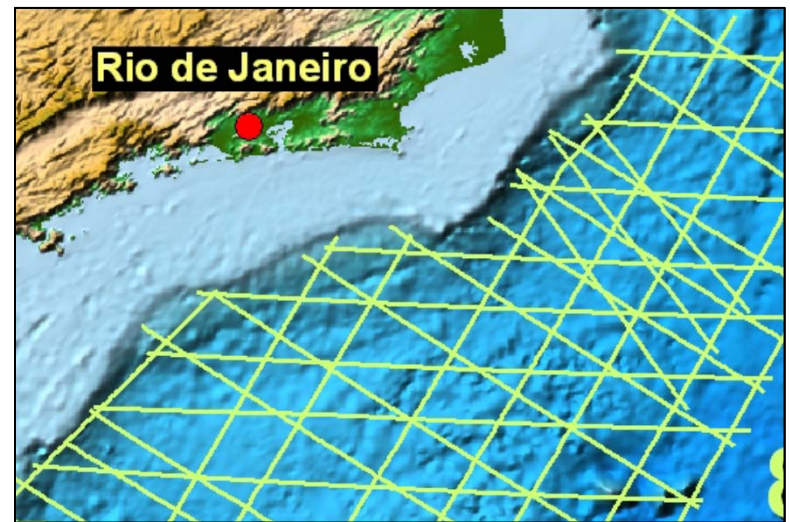
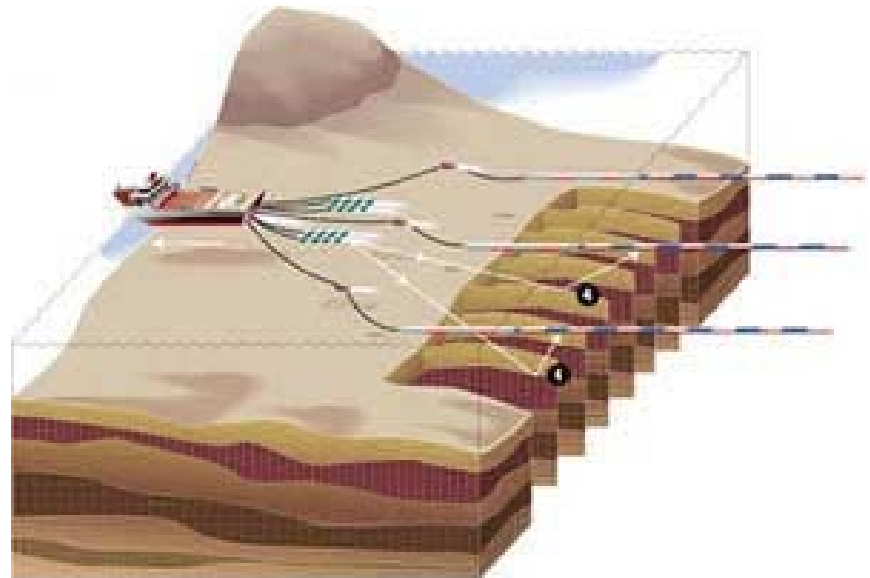
- 9,800 employees
- 70 locations worldwide
- \$4.2 Bn 2012 pro-forma revenue



Acquisition: Land



Acquisition: Marine



Dataflow: Example



Processing Contractor

Client

Data Hall 1



Data Hall 2



Data Hall 3

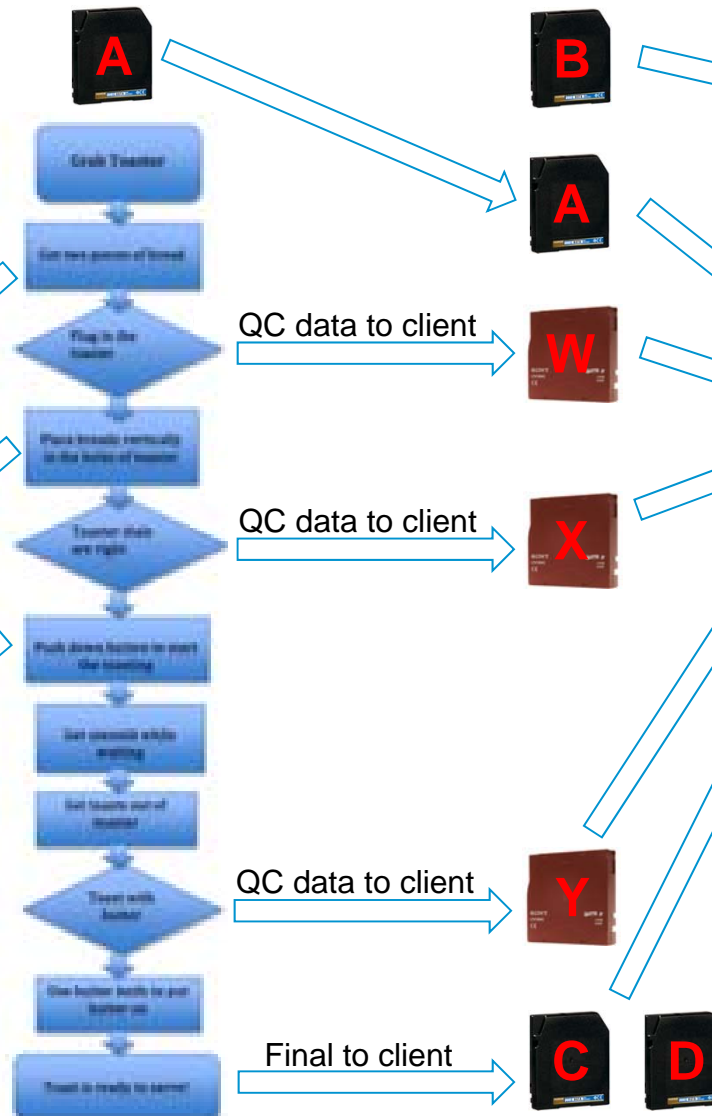


Data types

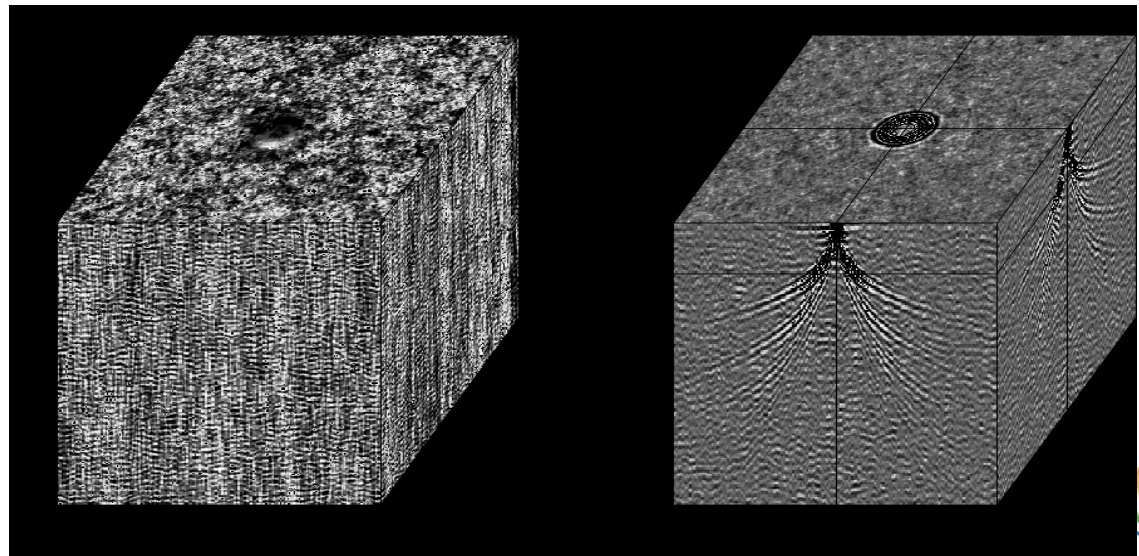
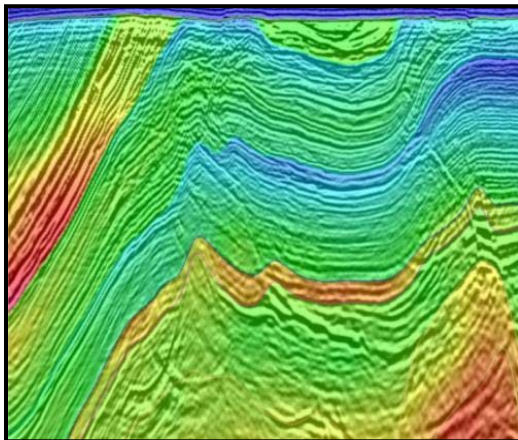
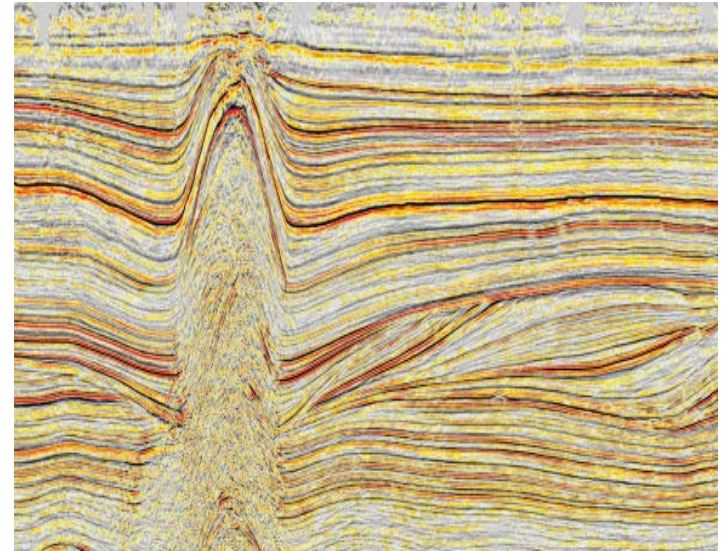
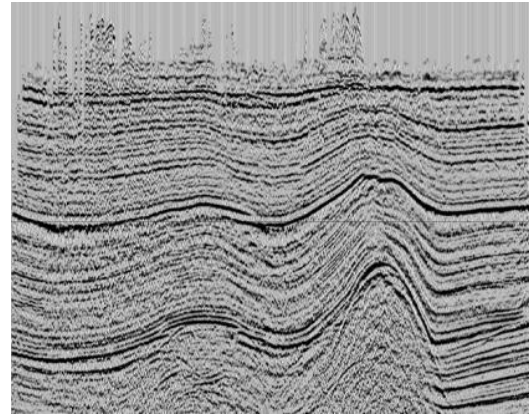
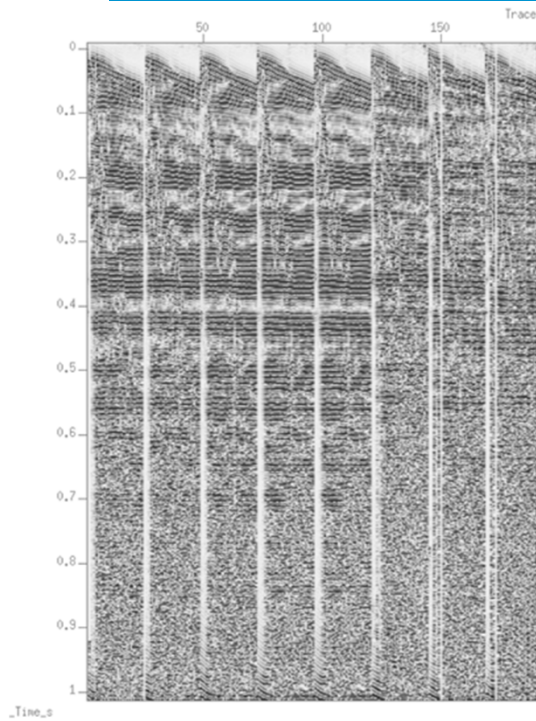
- Seismic field data
- Navigation data
- QC data
- Intermediate data
- Business data
- Archive data
- Backup data



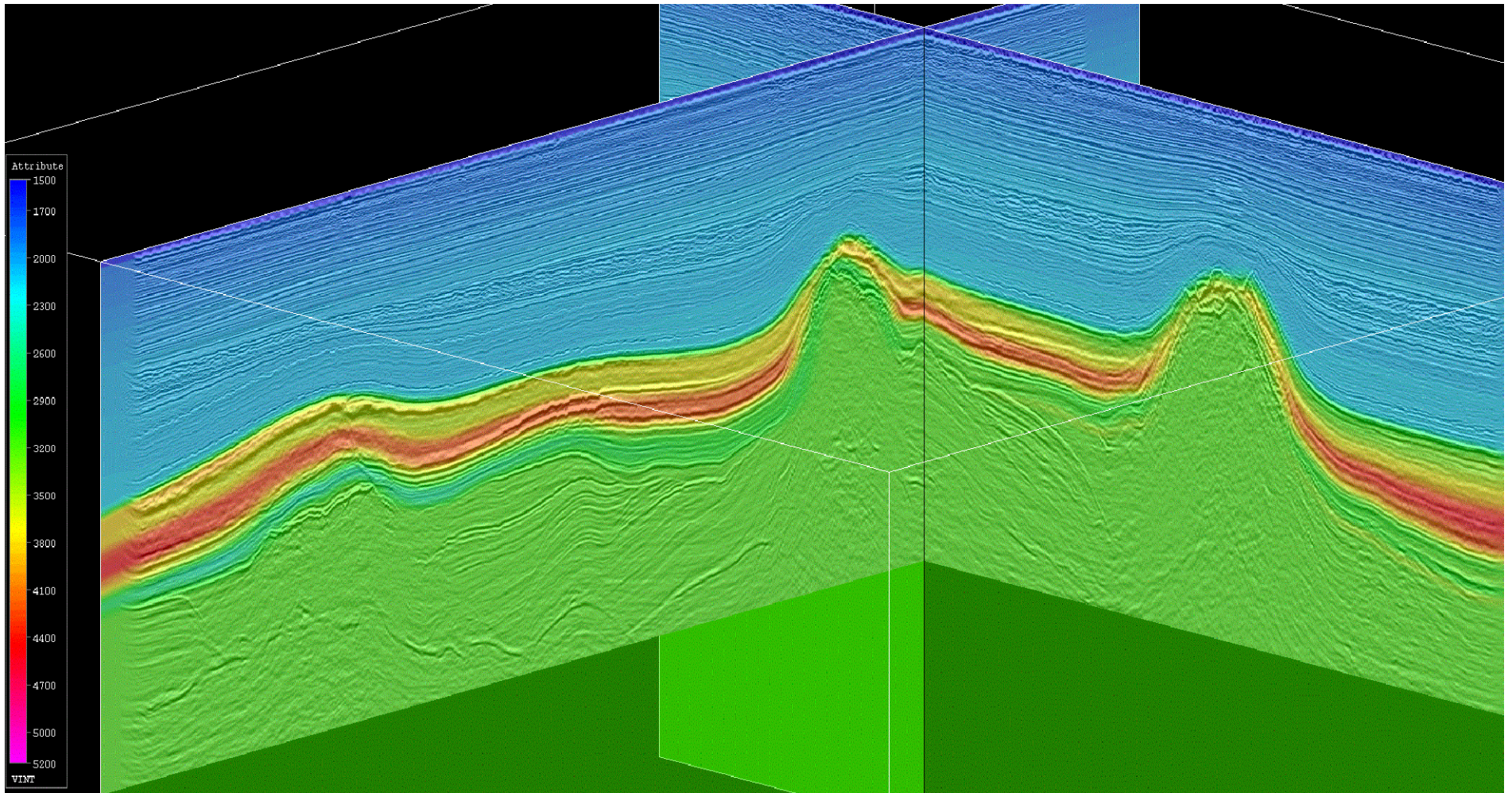
Intermediate data for DR and BCP or by Client Contract
"Temporary Data"



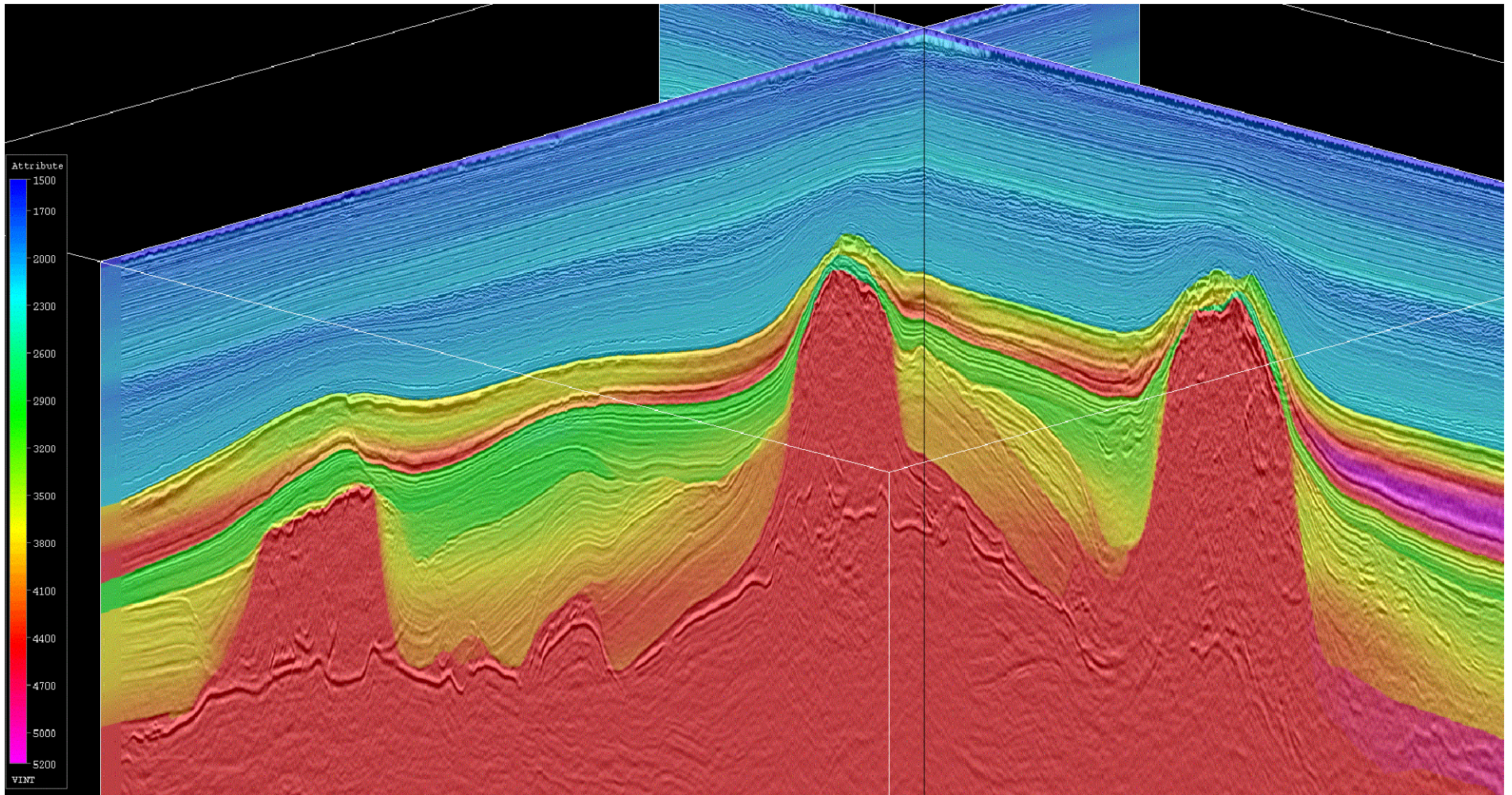
Dataflow: Images



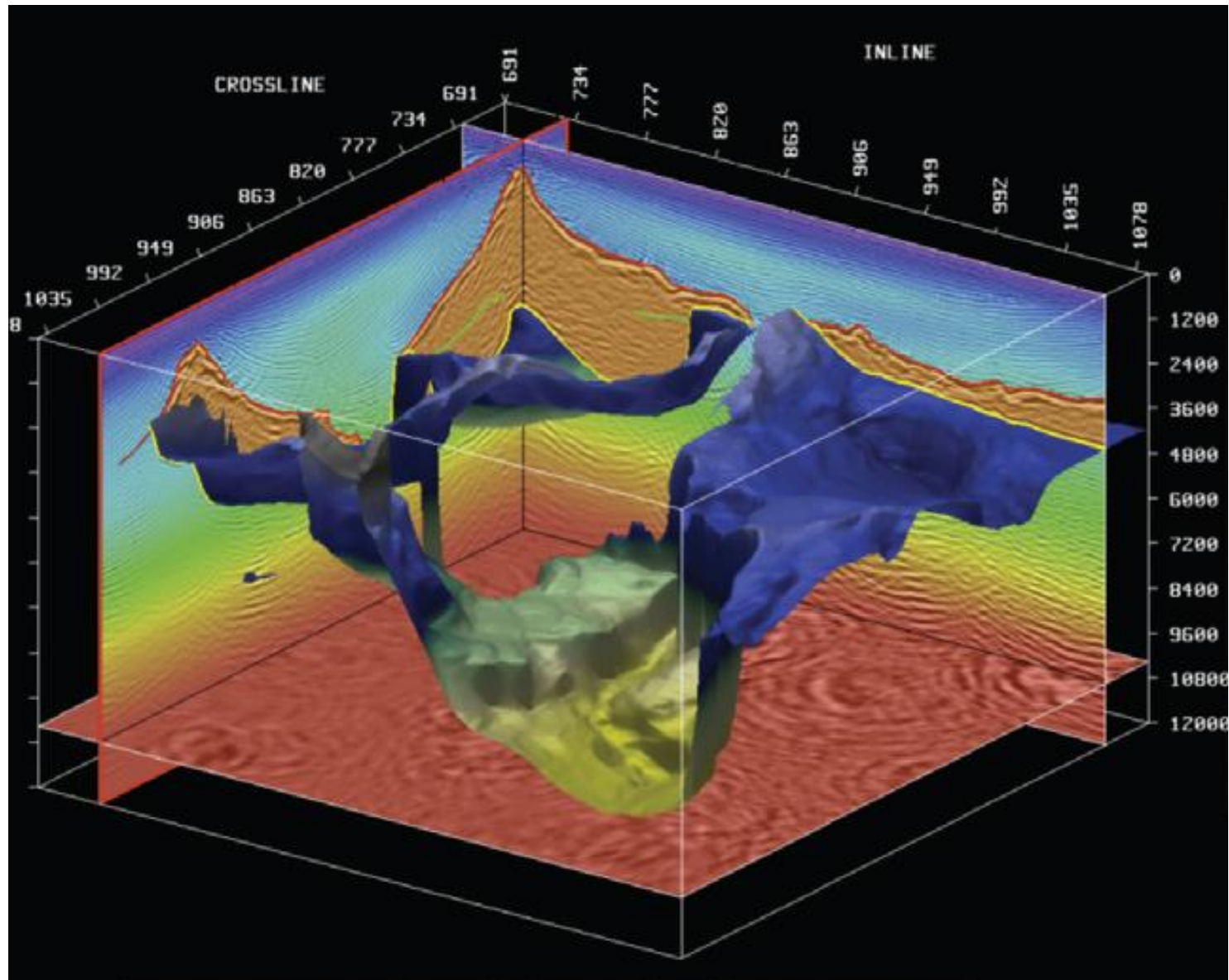
Dataflow: Images



Dataflow: Images



Dataflow: Images



Challenges

❑ Unique requirements

- Robustness of media for field data and storage.
- Long lifespan. Data may set on the shelf for many years.



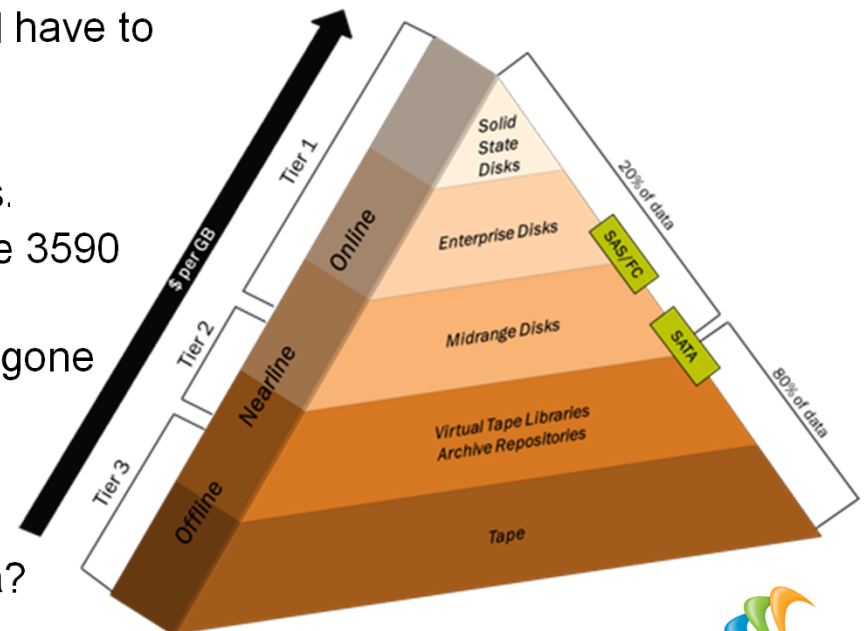
❑ Implemented Solutions

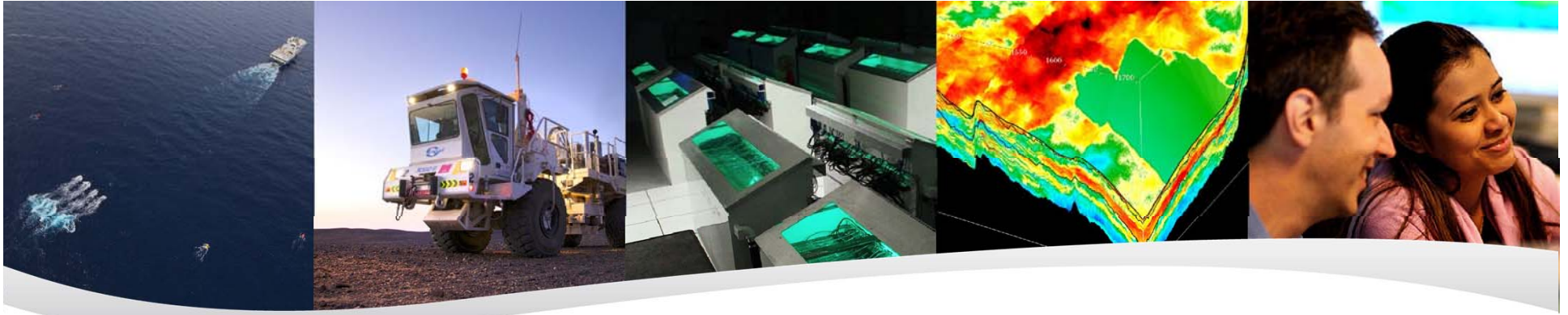
- Early setting of tape standards by SEG.
- Internally created data transfer applications.



❑ Storage challenges going forward

- Transcription: Re-reading old media. We still have to read 40 year old tapes for our clients.
- The longevity of tape drive hardware.
- Re-mastering the data center and the vessels.
 - New tapes and drives every 'X' years. The 3590 was in production for over 20 years.
 - In nine years, the 3592 drive has already gone through four generations of drive.
- BIG DATA! Data Loss. BIG DATA LOSS!
- Where's my Data????!!!!
- How much does it cost to manipulate my data?





Thank you

Passion for Geoscience
cgg.com

